

Technical data sheet

Product features



Freezing cabinet 700 l LED light, Icecream version GN 2/1, stainless steel

Model	SAP Code	00012371
ENFZ 700 L	A group of articles - web	Refrigeration and freezer cabinets



- GN / EN size in device: GN 2/1
- Chamber volume [l]: 458
- Minimum device temperature [°C]: -24
- Maximum device temperature [°C]: -10
- Insulation thickness [mm]: 90
- Control type: Digital
- Interior lighting: Yes
- Door lock: Yes
- Automatic defrost: Yes
- HACCP: Yes
- Annual energy consumption [kWh]: 2436

SAP Code	00012371	Chamber volume [l]	458
Net Width [mm]	847	Gross Volume [m3]	1.445
Net Depth [mm]	733	Net Volume [m3]	1.298
Net Height [mm]	2090	Number of GN / EN	24
Net Weight [kg]	131.00	GN / EN size in device	GN 2/1
Power electric [kW]	0.526	Minimum device temperature [°C]	-24
Loading	230 V / 1N - 50 Hz	Maximum device temperature [°C]	-10
Energy class	C	Refrigerant	R290

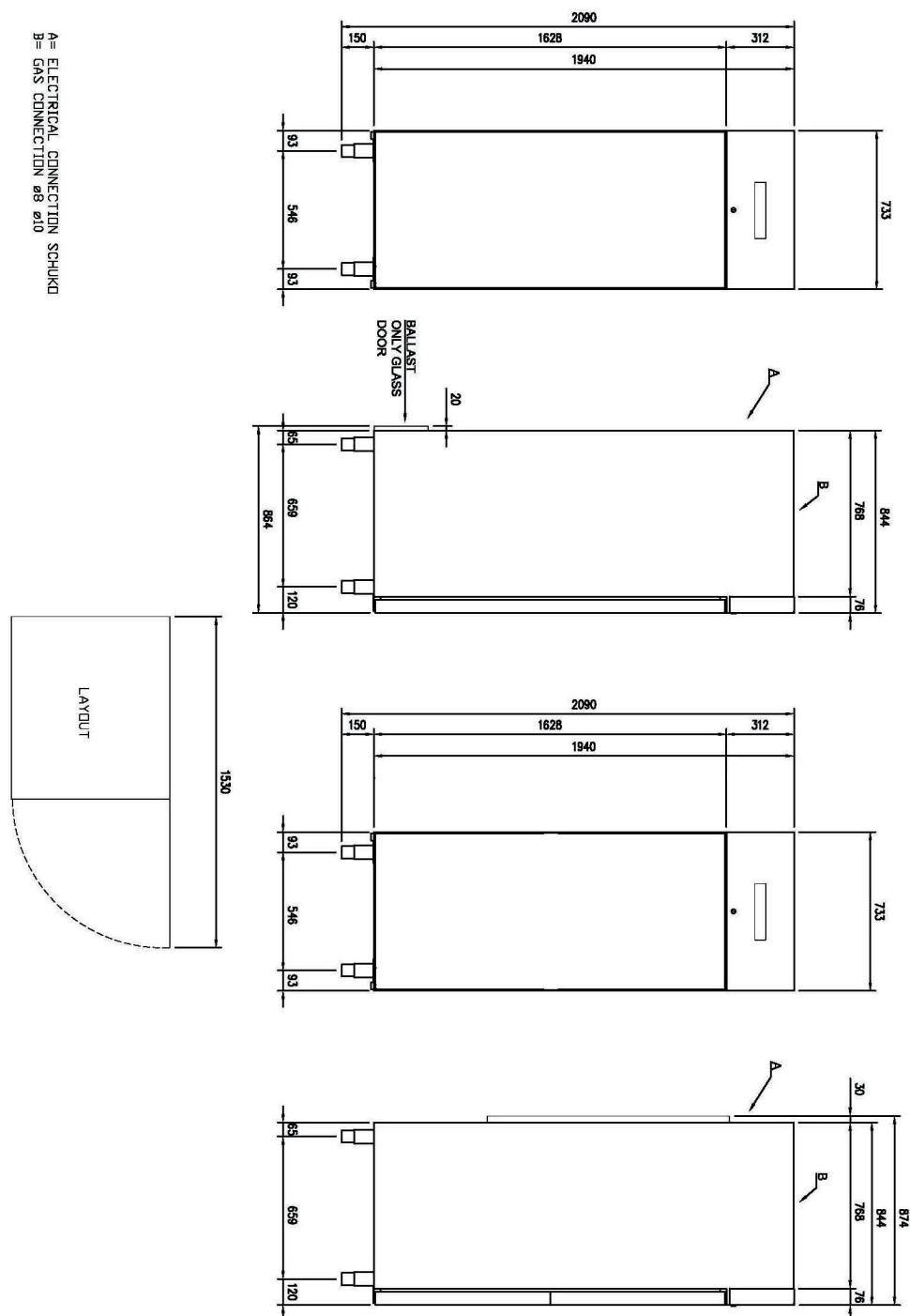
Technical data sheet

Technical drawing



Freezing cabinet 700 l LED light, Icecream version GN 2/1, stainless steel

Model	SAP Code	00012371
ENFZ 700 L	A group of articles - web	Refrigeration and freezer cabinets



Technical data sheet

Product benefits



Freezing cabinet 700 l LED light, Icecream version GN 2/1, stainless steel

Model	SAP Code	00012371
ENFZ 700 L	A group of articles - web	Refrigeration and freezer cabinets

1

Insulation 90mm

minimal losses
– energy saving

2

Two-sided opening

location variability
– greater operational efficiency
– better kitchen ergonomics

3

All-stainless design

corrosion resistance
– longer service life
– health safety

4

Automatic defrosting

nothing needs to be watched
– always working properly without extra operator requirements

5

Wheels, legs

variability
– user comfort

6

High energy class

minimal energy loss
high efficiency
guaranteed chilled food
– cost saving
– hygienic safety

Technical data sheet

Technical parameters



Freezing cabinet 700 l LED light, Icecream version GN 2/1, stainless steel

Model	SAP Code	00012371
ENFZ 700 L	A group of articles - web	Refrigeration and freezer cabinets

1. SAP Code:

00012371

2. Net Width [mm]:

847

3. Net Depth [mm]:

733

4. Net Height [mm]:

2090

5. Net Weight [kg]:

131.00

6. Gross Width [mm]:

763

7. Gross depth [mm]:

873

8. Gross Height [mm]:

2170

9. Gross Weight [kg]:

143.97

10. Device type:

Electric unit

11. Power electric [kW]:

0.526

12. Loading:

230 V / 1N - 50 Hz

13. Energy class:

C

14. Refrigerant:

R290

15. Material:

AISI 304

16. Exterior color of the device:

Stainless steel

17. Max ambient temperature [°C]:

40

18. Device properties 2:

Ice cream

19. GN / EN size in device:

GN 2/1

20. Number of GN / EN:

24

21. Chamber volume [l]:

458

22. Gross Volume [m3]:

1.445

23. Net Volume [m3]:

1.298

24. Adjustable feet:

Yes

25. Insulation thickness [mm]:

90

26. Number of doors:

1

27. Unit:

Yes

28. Control type:

Digital

Technical data sheet

Technical parameters



Freezing cabinet 700 l LED light, Icecream version GN 2/1, stainless steel

Model	SAP Code	00012371
ENFZ 700 L	A group of articles - web	Refrigeration and freezer cabinets

29. Door lock:

Yes

34. Maximum device temperature [°C]:

-10

30. Interior lighting:

Yes

35. Automatic defrost:

Yes

31. HACCP:

Yes

36. Number of grids:

7

32. Annual energy consumption [kWh]:

2436

37. Cross-section of conductors CU [mm²]:

0,5

33. Minimum device temperature [°C]:

-24